

# SUPERGROUT CG

## TECHNICAL DATA SHEET

2025



AVAILABLE  
IN MULTI COLOURS



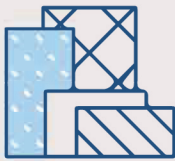
READY TO USE, POLYMER MODIFIED  
SINGLE COMPONENT WHITE  
CEMENT-BASED GROUT FOR  
THE INTERIOR/EXTERIOR FLOOR  
AND WALL JOINT GROUT WITH  
NON-SHRINKAGE, CRACK RESISTANT  
AND EXCELLENT BONDING





## FEATURES AND BENEFITS

1. Suitable for Interior and exterior applications
2. Contains special polymers to provide superior bond strength and water resistance
3. Suitable for joint width of 1-3 mm
4. Self-curing – No water curing required, enriched with water retention technology
5. Non-shrinkage and resistance to stains
6. Excellent workability, smooth and easy application & easy to clean
7. Economical and provides good coverage



## WORKS BEST ON

1. It can be used for interior and exterior floor and wall joints grouting of ceramic tiles, porcelain, vitrified and fully vitrified tiles, quarry tiles, bricks, pavers, natural and engineered stones
2. With water resistance properties, it can be used in areas like swimming pools, power shower areas etc.,

\*Note: Usage of FCSC ADMIX CG in combination to cementitious grouts will give the improved adhesion to tile/stone joints, reduce water permeability and improves flexibility



## CERTIFICATION

1. EN 13888
2. ANSI 118.61



## APPLICATION PROCEDURE

**Surface Preparation:** Make sure that the tile adhesive is fully set before grouting.

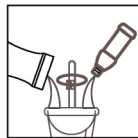
Prepare the surface before application by removing spacers placed between the tile. Scratch the tile joints and clean the joints. Remove dust, loose bonded particles and dirt using a wet sponge. Make sure that the surface is clean, dry and free from grease, oil, loose materials, adhesive residue and other contaminants. The room temperature must be between 4°C and 32°C.

It is recommended to dampen the joints before applying the grout so as to assist the spread of grout into the joints.



## INSTALLATION PROCEDURE

- Place the freshly mixed material over the dampen tile joints
- Spread the material in to the joints using a rubber float or a rubber bottomed trowel diagonally without leaving any void or gaps. Press timely to work into the tile joints to fill completely
- Apply in small areas at a time with diagonal movements to pack the joints
- Remove the excess grout from the tiles and ensure that the joints filled completely



## MIXING PROCEDURE

**Mixing:** Take 350-400ml of clean, potable water per 1kg powder into a clean mixing bowl. Add grout powder into the mixing bowl and mix the material by hand or with a slow speed mixer until a smooth, lump-free paste is obtained. Allow the material to slake for 5 minutes. Adjust the consistency of the material accordingly if necessary, but make sure that the water used is within the recommended range. Remix the material prior to the application and apply with the rubber float. The paste should be kept away from direct sunlight and heat. In case of Firstchoice Admix usage, stir the FCSC Admix Plus thoroughly and follow the above procedure for the mixing.





## TECHNICAL DATA

Product	:	FCSC Supergrout CG
Physical appearance	:	Free flowing color powder
Pack Size	:	1KG

### Application Data at 25±2°C & 60±5% RH

Mixing Ratio	:	35-40:100 – Water:Powder
Pot life in Hours	:	1 Hour
Curing	:	Self cured
Time to light foot traffic	:	24 hours
Time to heavy foot traffic	:	72 hours
Ambient Air Temperature	:	+5°C to +40°C

\*Open time may vary depending up on the site and atmospheric conditions

### ANSI 118.6

Test parameter	Standard Requirement	Product performance
Linear Shrinkage at 28 days ANSI A118.6: Clause 4.3	Max 0.30%	0.17% - 0.21%
Water Absorption at 27 days ANSI A118.6: Clause 4.4	Max 18%	12% - 15%
Compressive Strength at 1 day ANSI A118.6: Clause 4.5	Min 500 psi (3.43 MPa)	550 - 900 psi (3.79 - 6.20 MPa)
Compressive Strength at 28 days ANSI A118.6: clause 4.5	Min 3000 psi (20.62 MPa)	3100 - 3300 psi (21.37 - 22.75 MPa)
Tensile Strength at 28 days ANSI A118.6: Clause 4.6	Min 250 psi (1.71 MPa)	300 - 430 psi (2.06 - 2.96 MPa)
Flexural Strength at 28 days ANSI A118.6: Clause 4.7	Min 500 psi (3.43 MPa)	600 - 650 psi (4.13 - 4.48 MPa)



**EN 13888**

Test parameter	Standard Requirement	Product performance
Abrasion resistance: ISO 13007 – 4: Clause 4.4; EN 12808 – 2	$\leq 2000 \text{ mm}^3$	1250 – 1600 $\text{mm}^3$
Flexural strength under standard conditions: ISO 13007 – 4: Clause 4.1.3; EN 12808 – 3	$\geq 2.5 \text{ N/mm}^2$	3.7 – 5.1 $\text{N/mm}^2$
Flexural strength under freeze and thaw cycles: ISO 13007 – 4: Clause 4.1.5; EN 12808 – 3	$\geq 2.5 \text{ N/mm}^2$	3.7 – 5.1 $\text{N/mm}^2$
Compressive Strength under standard conditions: ISO 13007 – 4: Clause 4.1.4; EN 12808 – 4	$\geq 15 \text{ N/mm}^2$	22 – 24 $\text{N/mm}^2$
Compressive Strength under freeze & thaw cycles: ISO 13007 – 4: Clause 4.1.5; EN 12808 – 4	$\geq 15 \text{ N/mm}^2$	21 – 23 $\text{N/mm}^2$
Shrinkage: ISO 13007 – 4: Clause 4.3 : EN 12808 – 4	$< 3 \text{ mm/m}$	1.7 – 2.1 $\text{mm/m}$
Water Absorption after 30 Minutes: ISO 13007 – 4: Clause 4.2; EN 12808 – 5	$\leq 5.0 \text{ g}$	2.5 – 3.0 $\text{g}$
Water Absorption after 240 Minutes: ISO 13007 – 4: Clause 4.2; EN 12808 – 5	$\leq 10 \text{ g}$	3.0 – 7.0 $\text{g}$

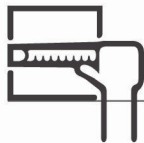
**FCSC SUPERGROUT CG, when mixed with FCSC  
ADMIX CG ANSI A118.6; – CG1 / EN 13888**

**ANSI 118.6**

Test parameter	Standard Requirement	Product performance
Linear Shrinkage at 28 days ANSI A118.6: Clause 4.3	Max 0.30%	0.17% – 0.21%
Water Absorption at 27 days ANSI A118.6: Clause 4.4	Max 18%	9% – 12%
Compressive Strength at 1 day ANSI A118.6: Clause 4.5	Min 500 psi (3.43 MPa)	590 – 920 psi (4.06 – 6.34 MPa)
Compressive Strength at 28 days ANSI A118.6: Clause 4.5	Min 3000 psi (20.62 MPa)	3200 – 3300 psi (22.06 – 22.75 MPa)
Tensile Strength at 28 days ANSI A118.6: Clause 4.6	Min 250 psi (1.71 MPa)	370 – 430 psi (2.55 – 2.96 MPa)
Flexural Strength at 28 days ANSI A118.6: Clause 4.7	Min 500 psi (3.43 MPa)	620 – 820 psi (4.27 – 5.65 MPa)

EN 13888

Test parameter	Standard Requirement	Product performance
Abrasion resistance: ISO 13007 - 4: Clause 4.4; EN 12808 - 2	$\leq 2000 \text{ mm}^3$	1100 - 1600 $\text{mm}^3$
Flexural strength under standard conditions: ISO 13007 - 4: Clause 4.1.3; EN 12808 - 3	$\geq 2.5 \text{ N / mm}^2$	4.2 - 5.7 $\text{N/mm}^2$
Flexural strength under freeze and thaw cycles: ISO 13007 - 4: Clause 4.1.5; EN 12808 - 3	$\geq 2.5 \text{ N / mm}^2$	3.5 - 5.0 $\text{N/mm}^2$
Compressive Strength under standard conditions: ISO 13007 - 4: Clause 4.1.4; EN 12808 - 4	$\geq 15 \text{ N / mm}^2$	22 - 24 $\text{N/mm}^2$
Compressive Strength under freeze & thaw cycles: ISO 13007 - 4: Clause 4.1.5; EN 12808 - 4	$\geq 15 \text{ N / mm}^2$	21 - 23 $\text{N/mm}^2$
Shrinkage: ISO 13007 - 4: Clause 4.3 : EN 12808 - 4	$< 3 \text{ mm / m}$	1.7 - 2.1 $\text{mm/m}$
Water Absorption after 30 Minutes: ISO 13007 - 4: Clause 4.2; EN 12808 - 5	$\leq 5.0 \text{ g}$	2.0 - 2.5 $\text{g}$
Water Absorption after 240 Minutes: ISO 13007 - 4: Clause 4.2; EN 12808 - 5	$\leq 10 \text{ g}$	3.0 - 6.0 $\text{g}$



**COVERAGE**

Tile Size X Thickness	Joint Width		
	1 MM	2 MM	3 MM
MM			
100X100X3	106	54	37
150X150X4	118	60	40
200X150X5	108	55	37
150X300X6	105	53	36
300X300X6	157	79	53
450X300X7	167	81	54
600X450X8	201	101	67
600X600X8	234	117	79
600X900X11	204	102	68
900X900X12	234	117	78



## PRECAUTIONS

---

Although **FCSC SUPERGROUT CG** is non-hazardous material, one should take the following precautions should be taken:

It is recommended to use the N95 nose mask, gloves and goggles

- while handling the material
- Keep out of reach of the children

In case of contact with eyes, rinse your eyes with plenty of water and consult a doctor immediately

For further and complete information about our product's safe use, please refer to the latest version of our material safety data sheet.



## LIMITATIONS

---

- Don't use acid to clean the joints
- Do not use on more than 3mm Tile Joint



## CLEANING

---

Tools and tackles should be cleaned with plenty of water while the adhesive is still fresh. Hardened/cured material can only be removed mechanically.



## SHELF LIFE

---

18 months from the date of manufacturing in the original unopened manufacturer's packaging. Store in clean dry place away from moisture



## STORAGE

---

Store in dry place away from the moisture



## CUSTOMER CARE

---

Please mail to [support@fcsc.co.in](mailto:support@fcsc.co.in) with your suggestion and complaints. For any other queries please contact +91 **3335000230**





Scan the QR code to know more about our other products



Manufacturer Details: A product of



**MANUFACTURED AND PACKED AT:**

- **BIHAR** - PATNA • **JHARKHAND** - JAMSHEDPUR • **ODISHA** - BHUBANESWAR
- **TELANGANA** - HYDERABAD • **WEST BENGAL** - KOLKATA, BARDHAMAN, SILIGURI

**Disclaimer**

Information given in the data sheet is only a guideline for usage. Users are advised to undertake trial for product suitability prior to its full scale usage. There is no implied guaranty/warranty for the results and the company is not liable for any consequential damages.